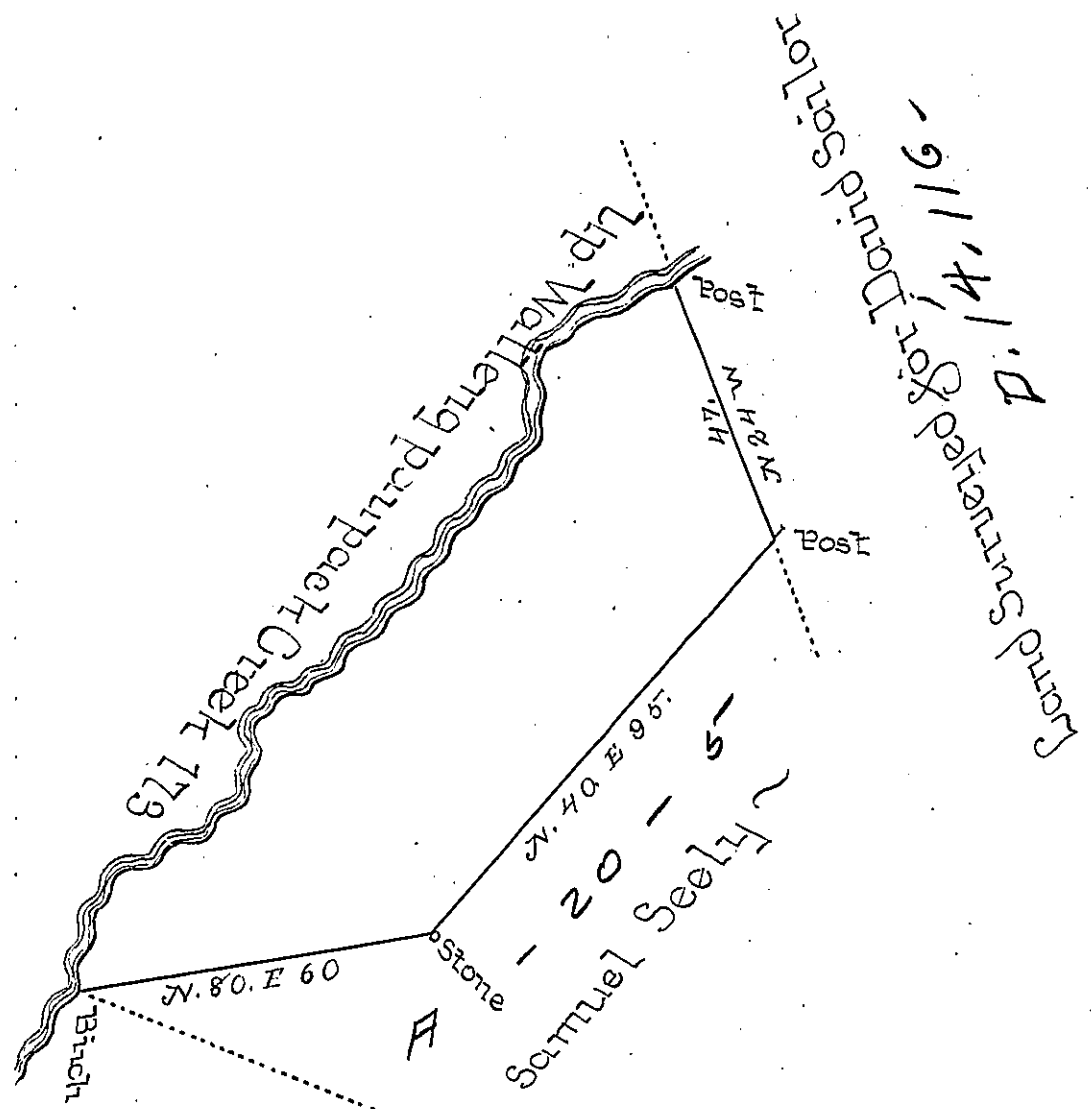


Bearing & distance
up Creek

- 1 S. 55 W. 14
 - 2 S. 76 W. 7
 - 3 S. 35 W. 5
 - 4 S. 10 E. 12
 - 5 S. 40 W. 31
 - 6 S. 30 W. 8
 - 7 S. 49 W. 32
 - 8 S. 60 W. 4
 - 07270 11
 - 0728.40 W. 13
 - 0728.60 W. 17
 - 12 S. 24 W. 10
- 173



By virtue of a Warrant dated the 12 April 1790 Surveyed the 4 November 1790 to Thomas Brown the above described tract of land Situate on the South Side of Wallengpau pack near Lechawaxsin in the County of Northampton Containing thirty one Acres three quarters and the allowance of Six P Cent &c.

Geo. Palmer DS
To Daniel Brodhead Esq }
Survey General ~~~~~ }

IN TESTIMONY that the above is a copy of the original remaining on file in the Department of Internal Affairs of Pennsylvania, made conformably to an Act of Assembly approved the 16th day of February, 1833, I have hereunto set my Hand and caused the Seal of said Department to be affixed at Harrisburg, this sixth day of July 1897.

James W. Fatta
Secretary of Internal Affairs.